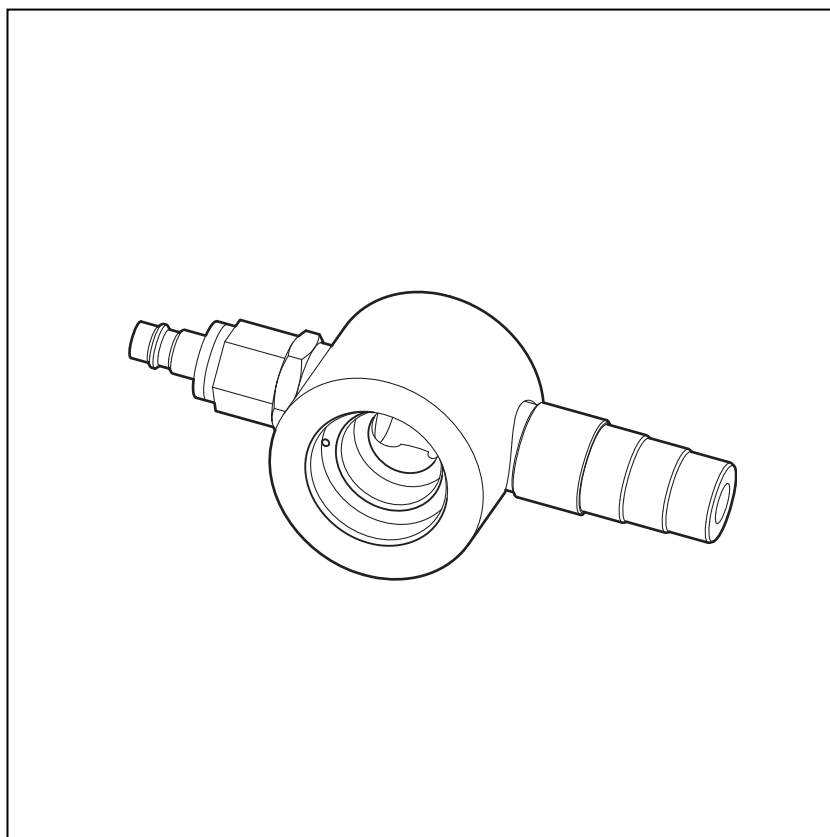

Spare parts list

PP02 Powder pump



Translation of the original operating instructions

Documentation PP02 Powder pump

© Copyright 2004 Gema Switzerland GmbH

All rights reserved.

This publication is protected by copyright. Unauthorized copying is prohibited by law. No part of this publication may be reproduced, photocopied, translated, stored on a retrieval system or transmitted in any form or by any means for any purpose, neither as a whole nor partially, without the express written consent of Gema Switzerland GmbH.

MagicCompact, MagicCylinder, MagicPlus, MagicControl, OptiFlex, OptiControl, OptiGun, OptiSelect, OptiStar and SuperCorona are registered trademarks of Gema Switzerland GmbH.

OptiFlow, OptiCenter, OptiMove, OptiSpeeder, OptiFeed, OptiSpray, OptiSieve, OptiAir, OptiPlus, OptiMaster, MultiTronic, EquiFlow, Precise Charge Control (PCC), Smart Inline Technology (SIT) and Digital Valve Control (DVC) are trademarks of Gema Switzerland GmbH.

All other product names are trademarks or registered trademarks of their respective holders.

Reference is made in this manual to different trademarks or registered trademarks. Such references do not mean that the manufacturers concerned approve of or are bound in any form by this manual. We have endeavored to retain the preferred spelling of the trademarks, and registered trademarks of the copyright holders.

To the best of our knowledge and belief, the information contained in this publication was correct and valid on the date of publication. Gema Switzerland GmbH makes no representations or warranties with respect to the contents or use of this publication, and reserves the right to revise this publication and make changes to its content without prior notice.

For the latest information about Gema products, visit www.gemapowdercoating.com.

For patent information, see www.gemapowdercoating.com/patents or www.gemapowdercoating.us/patents.

Printed in Switzerland

Gema Switzerland GmbH
Mövenstrasse 17
9015 St.Gallen
Switzerland

Phone: +41-71-313 83 00

Fax.: +41-71-313 83 83

E-Mail: info@gema.eu.com

Table of contents

Spare parts list	3
Ordering spare parts	3
PP02 Powder pump - spare parts list	4
PP02 Powder pump - fluidizing/suction unit	5

Spare parts list

Ordering spare parts

When ordering spare parts for powder coating equipment, please indicate the following specifications:

- Type and serial number of your powder coating equipment
- Order number, quantity and description of each spare part

Example:

- **Type** PP02 Powder pump, **serial no.** 1234 5678
- **Order no.** 203 386, 1 piece, Clamp - Ø 18/15 mm

When ordering cable or hose material, the required length must also be given. The spare part numbers of this yard/meter ware is always marked with an *.

The wear parts are always marked with a #.

All dimensions of plastic hoses are specified with the external and internal diameter:

Example:

Ø 8/6 mm, 8 mm outside diameter (o/d) / 6 mm inside diameter (i/d)



WARNING!

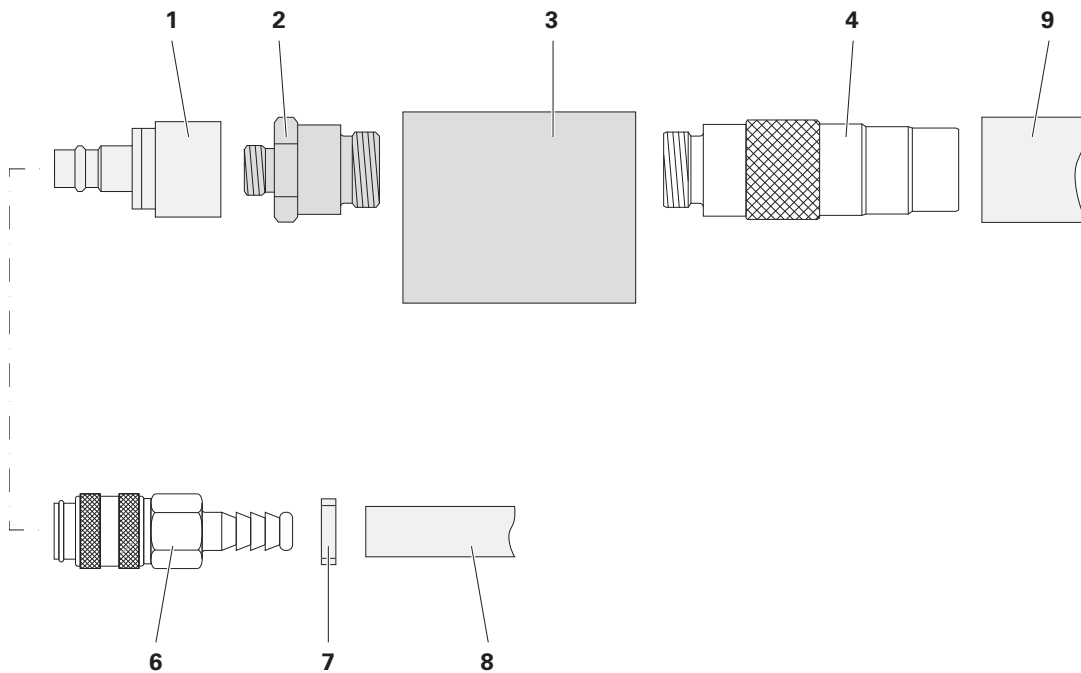
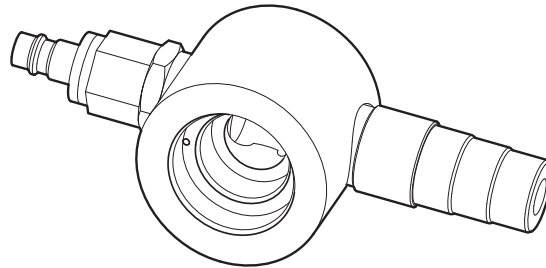
Only original Gema spare parts should be used, because the explosion protection will also be preserved that way. The use of spare parts from other manufacturers will invalidate the Gema guarantee conditions!

PP02 Powder pump - spare parts list

	PP02 Powder pump - complete (pos. 1-4)	357 910
1	Non-return valve	347 345
2	Nozzle	357 936
3	Pump body	357 928
4	Hose connection	357 944#
6	Quick coupling	239 267
7	Hose clamp	1001 729
8	Conveying air hose - D17/10	105 147*
9	Powder hose - D22/30, type 1006	103 780*#

Wearing part

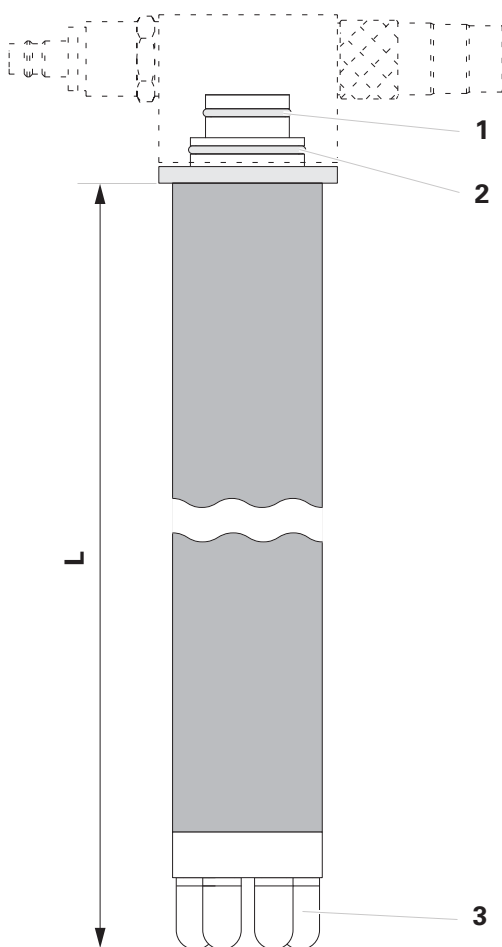
* Please indicate length



PP02 Powder pump - spare parts

PP02 Powder pump - fluidizing/suction unit

	Fluidizing/suction unit for PP02 - complete (without powder pump), L=682 mm	357 960
	Fluidizing/suction unit for PP02 - complete (without powder pump), L=1090 mm	370 843
1	O-Ring - Ø 25x2 mm	241 733#
2	O-Ring - Ø 35x2 mm	220 442#
3	Fluidizing pad	237 264#
	# Wearing part	



PP02 Powder pump - fluidizing/suction unit