

# Application Success Stories

## S&D Blechtechnologie GmbH OptiFlex® Pro Spray



Maximum Transfer  
Efficiency

Expanding capacity

Highest coating quality

# Application Success Stories

## Installation Key Data

<b>Parts:</b>	Components of sheet metal, steel and welded design parts
<b>Parts size:</b>	H 2'500 mm
	W 2'500 mm
	L 6'000 mm

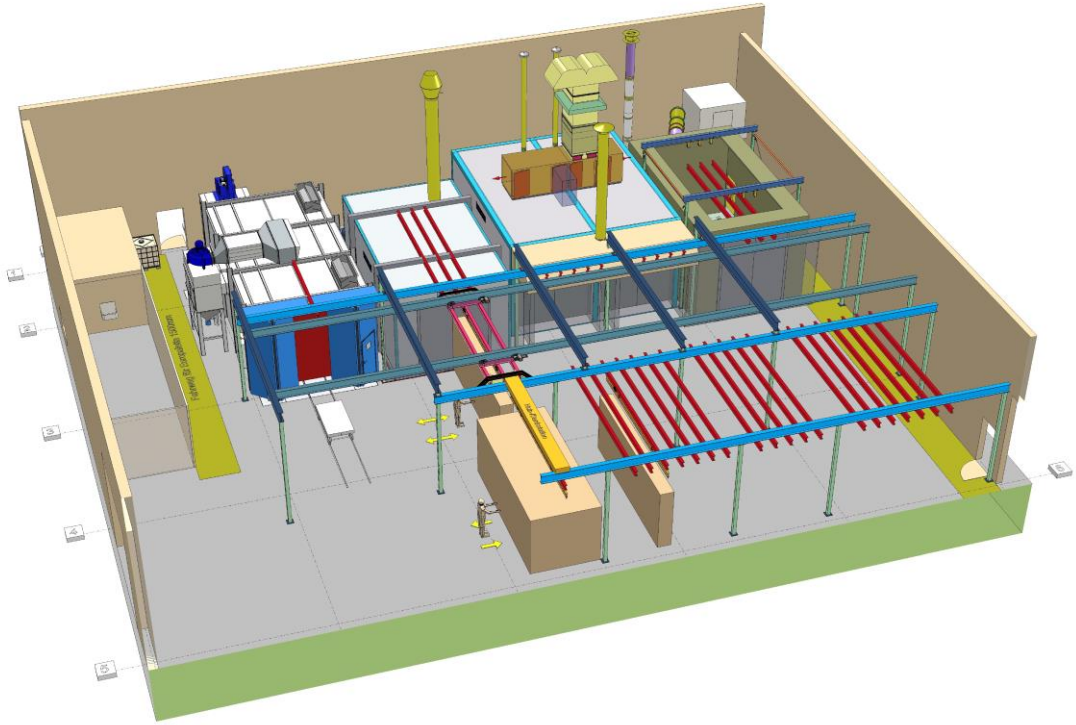
to 1'000 kg weight per part  
Cycle operation

**Scope of delivery:**  
2 x OptiFlex® Pro Spray B manual units  
2 x SuperCorona



# Application Success Stories

## Layout



# Application Success Stories

The company S&D Blechtechnologie GmbH was founded in April 2002 by Mr. Alois Spieles and Ralf Donell in the Eifel region in South-West Germany. They started with 7 employees in industrial sheet metal processing. They are a certified welding company and are following to ISO 9001 quality management. A wide variety of modern sheet metal processing machines such as fiber lasers, welding robots and press brakes belong to the company, which now produces on an area of more than 7'300 m<sup>2</sup>.

The 20-year-old powder coating plant has reached its limits and was renewed in 2022 with a new powder coating line. The focus was on expanding capacity and improving surface quality. In the course of the new plant technology, which is equipped with a wet-chemical pre-treatment plant and blasting technology with steel grain. In this way, the quality requirements of QIB are also met.

In order to raise the powder coating to the highest quality standard, the company S&D Blechtechnologie GmbH has opted for 2 pieces of OptiFlex® Pro B Spray.

Now, more than a year of operation, the positive properties have been confirmed. By using the AP01.1 application pump and the resulting constant powder output, the varying layer thickness is reduced to a minimum and powder savings of up to 20% were realized. The surface quality is noticeably more uniform in terms of layer thickness and a smoother surface is clearly visible.

Due to the lower proportion of overspray, the amount of waste powder has been reduced by approx. 40%. The cascade technology with the possibility of the low-current mode "PCC Mode" (Precise Charge Control), as well as the PowerBoost® mode underlined the invest in the manual unit. The high-quality execution of the manual unit ensures that S&D will use this investment in the long term with the highest transfer efficiency.

