

Application Success Stories

Pöttinger Landtechnik GmbH Agricultural machines



Flexibility

Profitability

Automation

Application Success Stories

Installation Key Data

Parts: Agricultural machines

Parts size: H 2'000 mm
W 1'600 mm
L 5'500 mm

Conveyor speed: 1.5 m/min

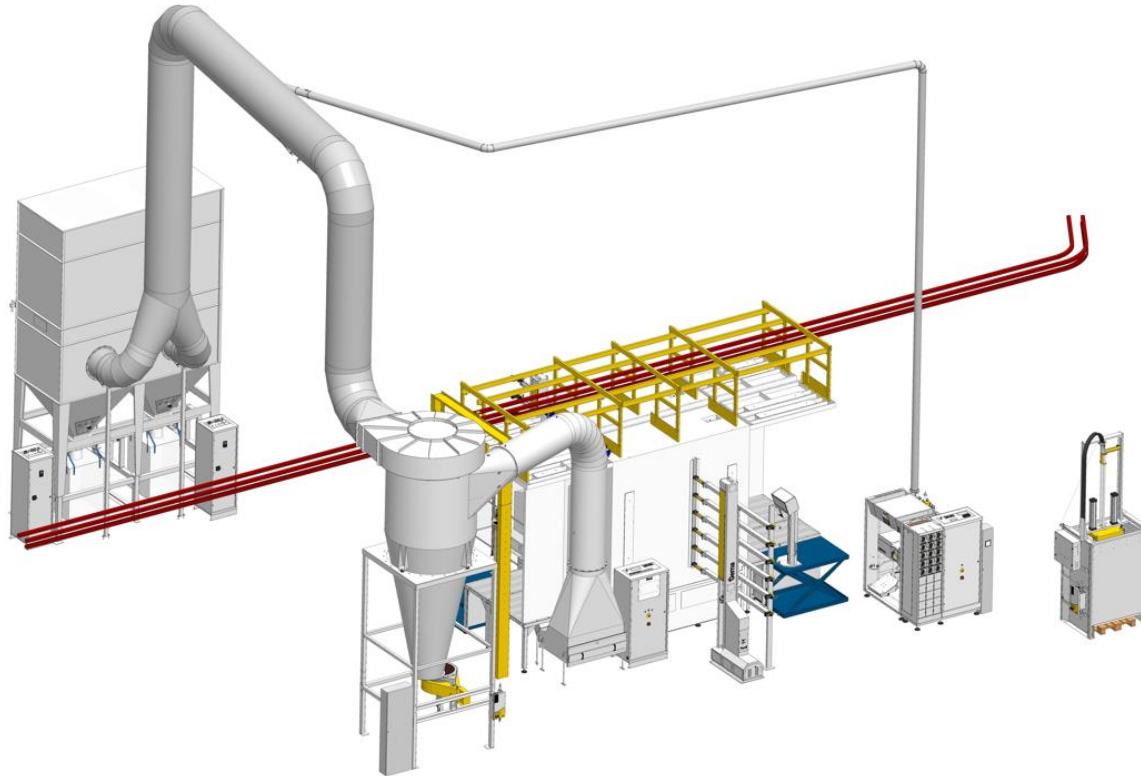
Scope of delivery of 2 identical lines, each with:

- 1 x OptiFlex® AS06 / 14G
- 12 x OptiGun® GA03P-1250 automatic gun
- 2 x OptiSelect® Pro GM04 manual gun
- 2 x Reciprocators ZA13 axis, each with 6 x U-axis UA04
- 1 x ICS04 / MagicControl 4.0 (CM40) control system
- 1 x OptiCenter® OC07
- 1 x MagicCompact® EquiFlow® color change booth
- Dynamic Contour Detection

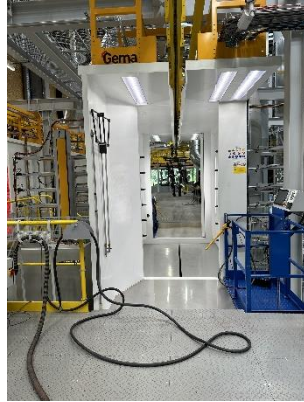


Application Success Stories

Layout



Application Success Stories



The highest quality - right from the start
On 14 April 2023, the second hall was officially opened at the new plant in St. Georgen near Grieskirchen (AT). After a construction period of almost 1.5 years, the agricultural machinery manufacturer Pöttinger has commissioned a modern cathodic dip priming (CDP) and powder coating line in this second expansion phase. With the new priming and coating line the parts for rakes and round balers now get their colourful coat of paint. These parts were previously delivered from the painting line at the headquarters in Grieskirchen. In addition, state-of-the-art methods are used to get orders from external companies that requiring high-quality

coatings. Industrial customers in particular, who have the same high corrosion protection specifications as Pöttinger, are impressed. Thanks to the advanced Dynamic Contour Detection, orders can be carried out in black CDP with high wall thicknesses and heavy unit weights. The maximum suspended load is 1'200 kg.

Top paint quality

The automotive quality paint finish using cathodic dip priming (CDP) and powder coating is an environmentally friendly process. No solvent is used in the mixing and application of the coatings. The painting process achieves excellent

hardness and therefore a longer service life. Pöttinger combines an environmentally friendly painting processes with sustainability. "The finish of the paintwork also plays a major role in ensuring the high quality expected from our machines. The impact-resistant coating lasts the entire lifetime of the product. This was one of the reasons why we also invested in a painting line at this site," emphasises Gregor Dietachmayr, Speaker of the Executive Board.