

APS 1

Automatic Powder System

Table of Contents

APS automatic powder system	
1. Fields of application	1
2. Scope of delivery	1
Automatic plant without reciprocator	1
Automatic plant with reciprocator	1
Designation	2
General information	3
Setting up possibilities	4
1. With wall bracket	4
2. With base cabinet for mounting on the wall	4
3. With base cabinet for floor mounting	5
Spare Parts List	
Control unit housing - Wall mounting	8
Control unit housing - with Base cabinet	8
APS 1 - Base cabinet with Frequency converter (Power section)	10
APS 1 - Base cabinet with PRP 1 - Open Frame	12

APS automatic powder system

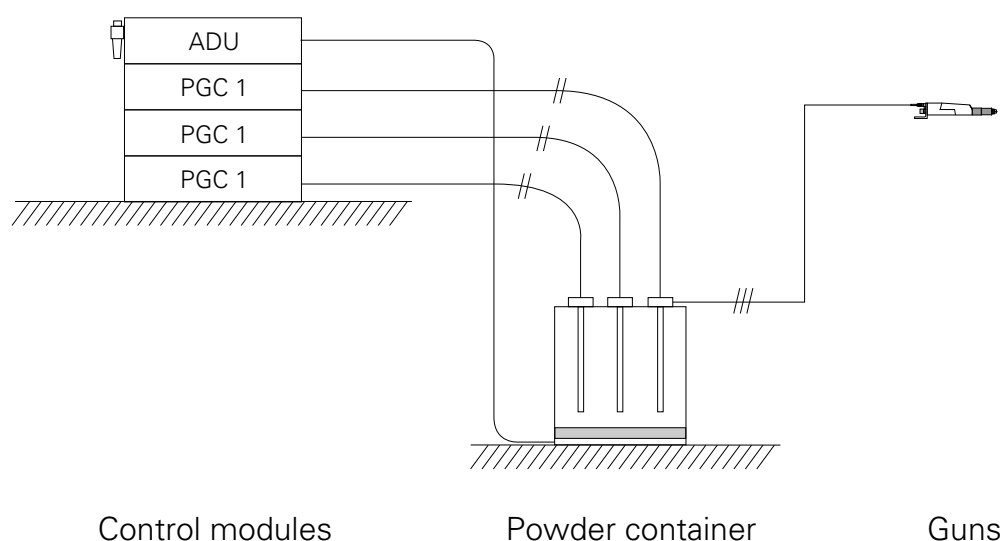
1. Fields of application

The APS automatic powder system with PG 1-A automatic powder guns is especially designed to meet the demands of production line applications in both manufacturing, and custom electrostatic coating installations. The flexible, modular structure of the APS is readily adaptable to any changes in your installation.

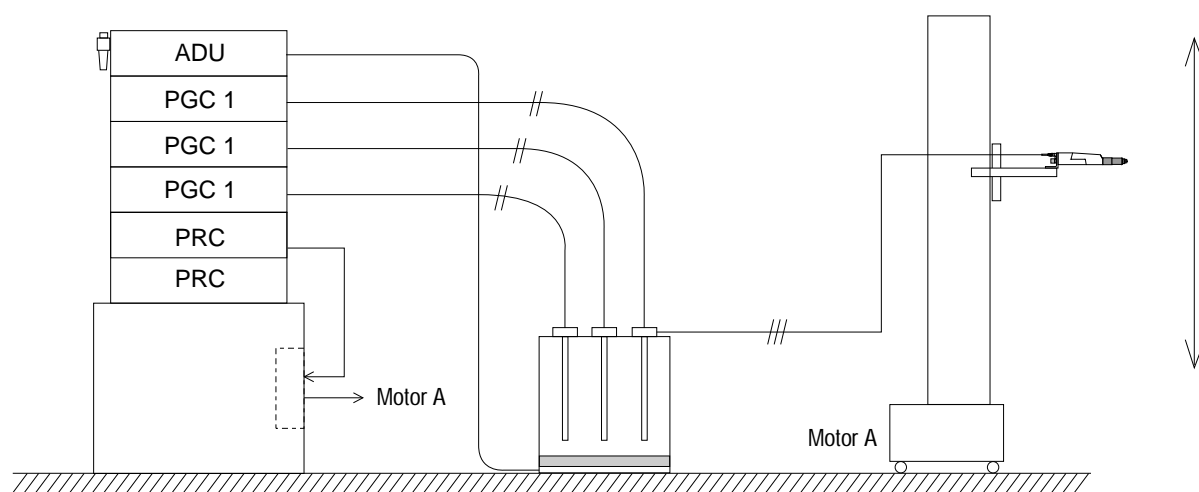
2. Scope of delivery

The scope of delivery depends on the number and composition of the modules (see below).

Automatic plant without reciprocator



Automatic plant with reciprocator



Designation

Automatic Powder System

System

APS . _____ Number of guns

Atomizer

Automatic gun

PG 1-A

PG 1-A E enamel

Controls

Control unit

PGC 1 (Gun control)

PRC 2 (Robot control)

ADU 1 (Air distribution unit)

Composite units

Injector

PI 3-V Powder - **V**ertical connections

PI 3-H Powder - **H**orizontal connections

EI 1-V Enamel - **V**ertical connections

EI 1-H Enamel - **H**orizontal connections

Powder hopper

General information

This is general information, for more detailed information see corresponding Operating Instructions

Mains supply :

- The Mains supply is foreseen as a single phase supply.
- When only the PGC 1 unit is used the control module can be connected to one of the following voltages - 100/110/120/200/220/240V
- When the PRC 1 unit is also fitted the power supply must be changed to 220/240 V.
- When the PRC 1 unit is used, a main switch is also to be fitted in the base cabinet for the whole power supply.
- The mains frequency can be 50 or 60 Hz.
- Adding the connected load of the individual units together gives the total connected load for the complete system.
- All electrical components correspond to the IP 54 type of protection.

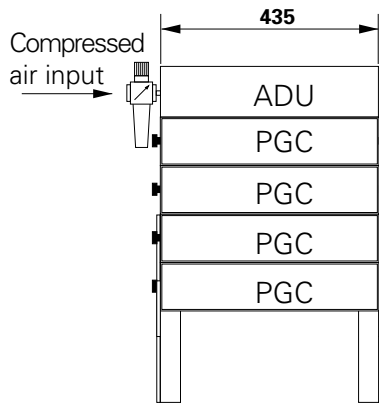
Compressed air:

- An ADU unit is always fitted for compressed air distribution.
- The equipment only requires a compressed air supply on the ADU unit.
- The following values for compressed air must be maintained :

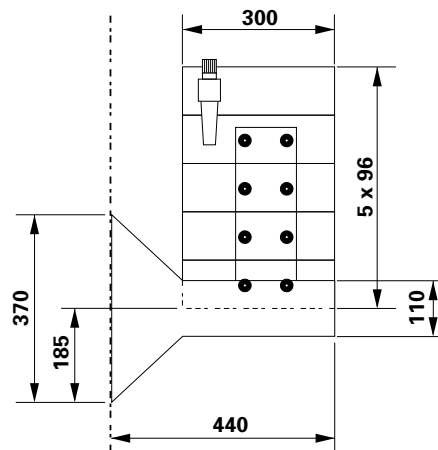
Input pressure :	7-10 bar
Max. water vapour :	1.3 g/m ³
Max. oil vapour :	0.1 ppm

Setting up possibilities

1. With wall bracket



Front view



Side view

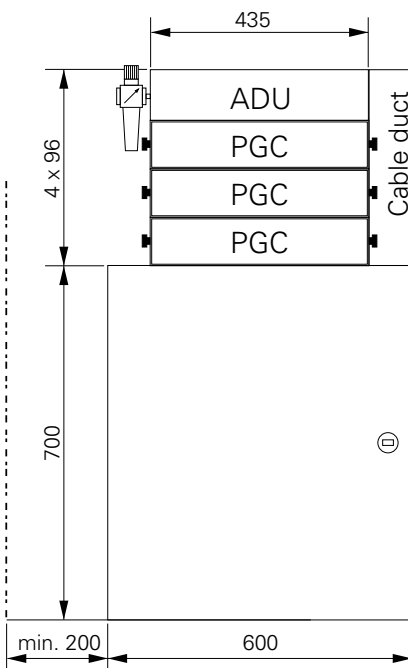
Use :

- up to 4 control module units can be fitted

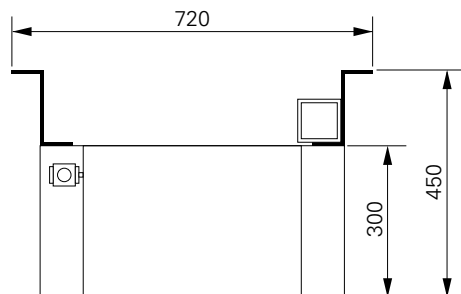
2. With base cabinet for mounting on the wall

Use :

- up to 3 control module units can be fitted
- When the PRC unit is used the frequency converter is fitted in the base cabinet. Enough space must be left around unit for proper ventilation.



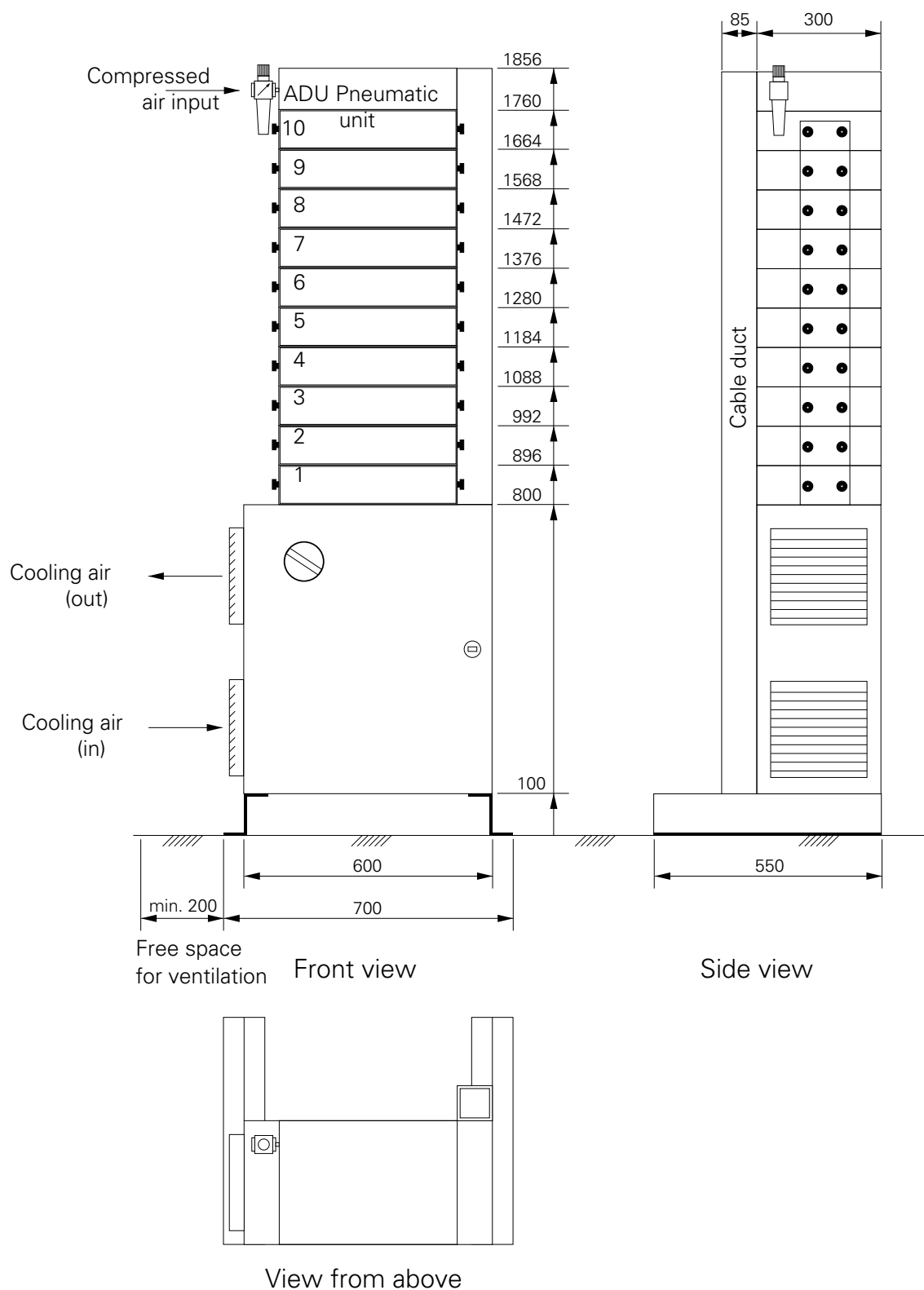
Front view



View from above

Free space
for ventilation

3. With base cabinet for floor mounting



Use :

- up to 10 gun control module units can be fitted without a reciprocator control module.
- up to 8 guns with 1 or 2 reciprocator control modules when a PRC 1 unit is used.

Notes :

Spare Parts List

Ordering Spare Parts

When ordering spare parts for powder coating equipment, please indicate the following specifications :

1. Type, and serial number of your powder coating equipment.
2. Order number, quantity, and description of each spare part.

Example :

- 1. Type :** APS 1 **Serial no :** XXXX XXXX
2. Order no : 234 265 1 piece, Sealing gasket

When ordering cable or hose material the length required must also be given.
The spare part numbers of this yard/metre ware is always marked with an *.

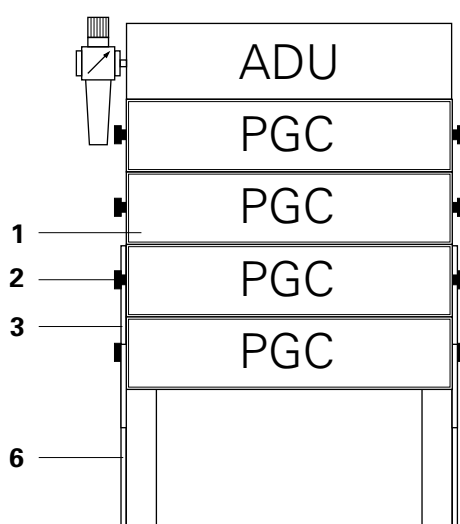
The spare part number of yard/metre ware always begins with 1..

All wear parts are marked with a #.

All dimensions of plastic hoses are given as external and internal diameters :
e.g. $\varnothing 8 / 6$ mm = 8 mm outside diameter (o/d) / 6 mm inside diameter (I/d).

Control unit housing - Wall mounting

1	Control unit housing	336 548
2	Milled nut - M5	201 090
3	Connection plate	336 262
	- for 2 units	340 111
	- for 4 units	340 120
6	Wall mounting bracket	336 599

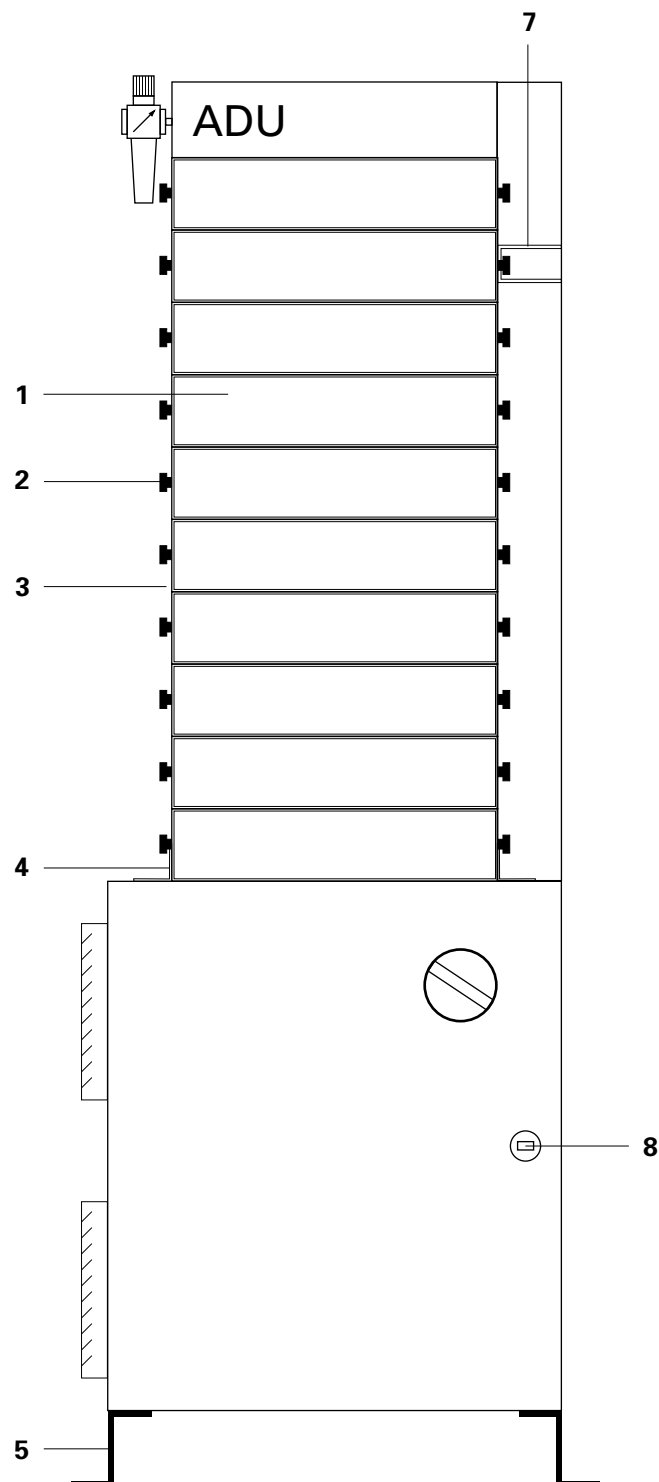


Wall mounting

Control unit housing - with Base cabinet (see opposite page)

1	Control unit housing	336 548
2	Milled nut - M5	201 090
3	Connection plate	336 262
	- for 2 units	340 111
	- for 4 units	340 120
4	Fixing bracket	340 138
5	S-Angle bracket	340 219
6	Wall mounting bracket	336 599
7	Bracket for cable channel	340 146
8	Door lock	244 660
	Square key	206 008

Control unit housing - with Base cabinet



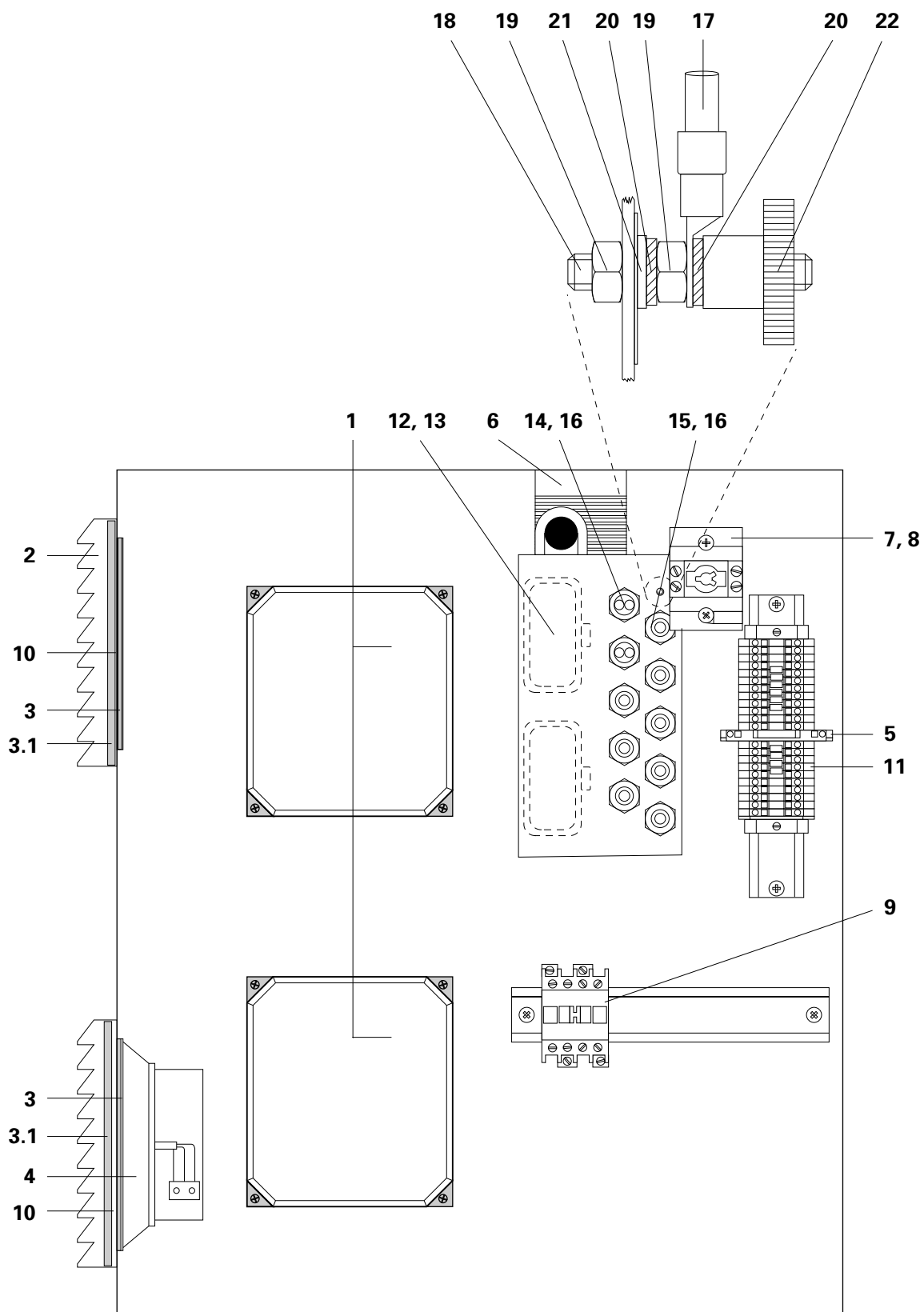
Cabinet mounting

APS 1 - Base cabinet with Frequency converter (Power section)

1	Frequency converter (Power section)	248 231
2	Exit filter (incl. item 3.1)	238 112
3	Fine filter pad	234 273#
3.1	Coarse filter pad	234 311#
4	Fan unit (incl. item 3.1)	234 257
5	Fuse - F 1.25 A (Slow)	201 618#
6	Thermostat - 220/24 V	238 171
7	Main switch (contact block only)	241 202
8	Main switch - complete	343 455
9	Relay - 4 kW	203 955
10	Sealing gasket	234 265
11	Contact rail - complete	344 133
12	Socket housing - 16 pole	230 049
13	Socket contacts - 16 pole	202 150
14	Lead-through - PG 16	204 366
15	Lead-through - PG 16/2	204 374
16	Cap nut - PG 16	204 412
17	Grounding cable	301 140
18	Studding - M6x50	301 159
19	Nut - M6	200 417
20	Shakeproof washer - M6	200 450
21	Washer - M6	200 476
22	Milled grounding nut - M6	200 433

Wear Part

APS 1 - Base cabinet with Frequency converter (Power section)

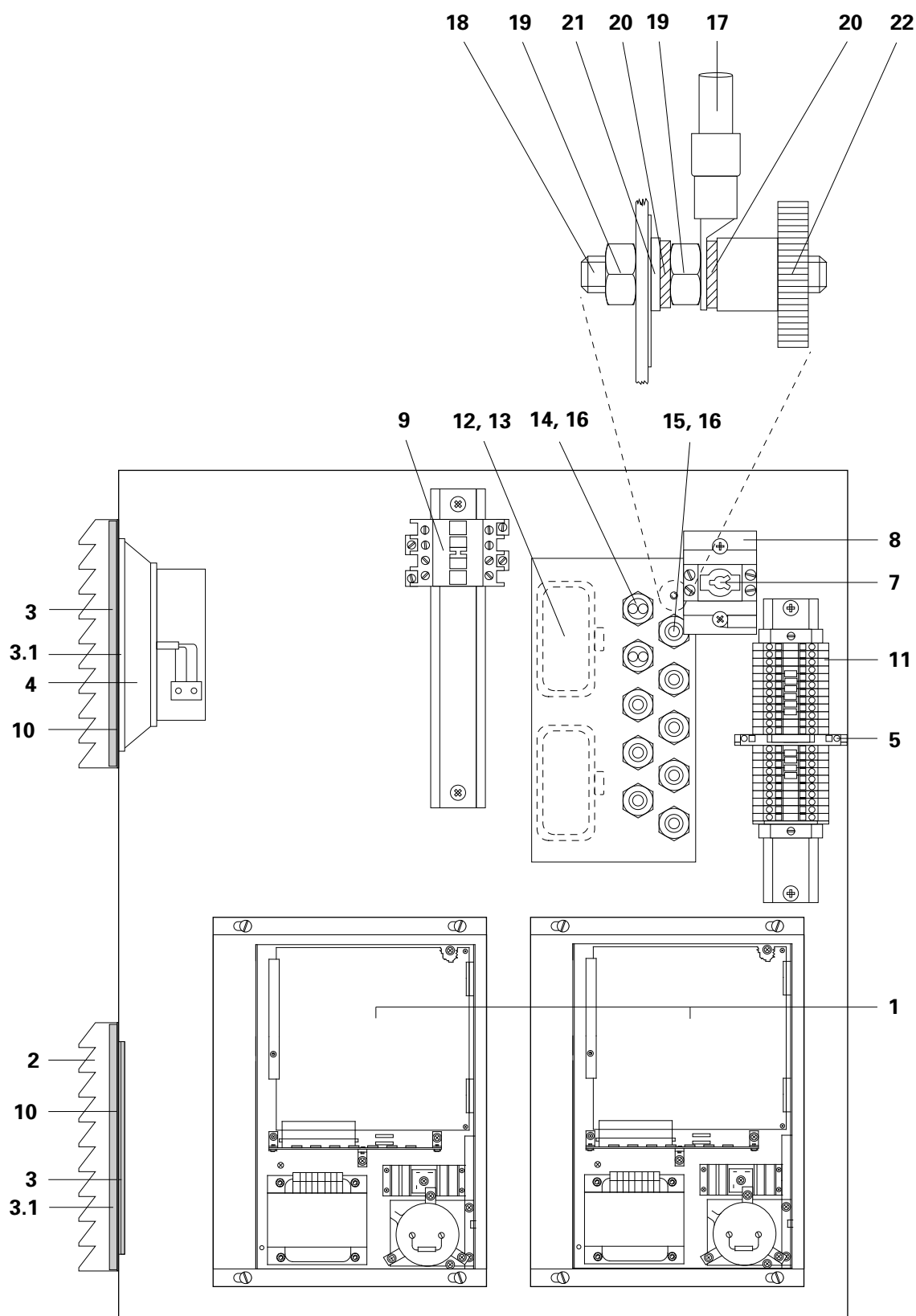


APS 1 - Base cabinet with PRP 1 - Open Frame

1	PRP 1 - Printed circuit board	343 196
2	Exit filter (incl. item 3.1)	238 112
3	Fine filter pad	234 273#
3.1	Coarse filter pad	234 311#
4	Fan unit (incl. item 3.1)	234 257
5	Fuse - F 1.25 A (Slow)	201 618#
6	Thermostat - 220/24 V	238 171
7	Main switch (contact block only)	241 202
8	Main switch - complete	343 455
9	Relay - 4 kW	203 955
10	Sealing gasket	234 265
11	Contact rail - complete	344 133
12	Socket housing - 16 pole	241 385
13	Socket contacts - 16 pole	202 150
14	Lead-through - PG 16	204 366
15	Lead-through - PG 16/2	204 374
16	Cap nut - PG 16	204 412
17	Grounding cable	301 140
18	Studding - M6x50	301 159
19	Nut - M6	200 417
20	Shakeproof washer - M6	200 450
21	Washer - M6	200 476
22	Milled grounding nut - M6	200 433

Wear Part

APS 1 - Base cabinet with PRP 1 - Open Frame



Documentation APS 1

© Copyright 1992 GEMA-VOLSTATIC AG.

All technical products from GEMA-VOLSTATIC AG, CH-9015 St. Gall are constantly being developed based on our continuing research and applications. The data found in this publication may therefore change at any time without prior notification.

Printed in Switzerland