

# Ultrasonic Sieve Insert

## (US07/US07-01)

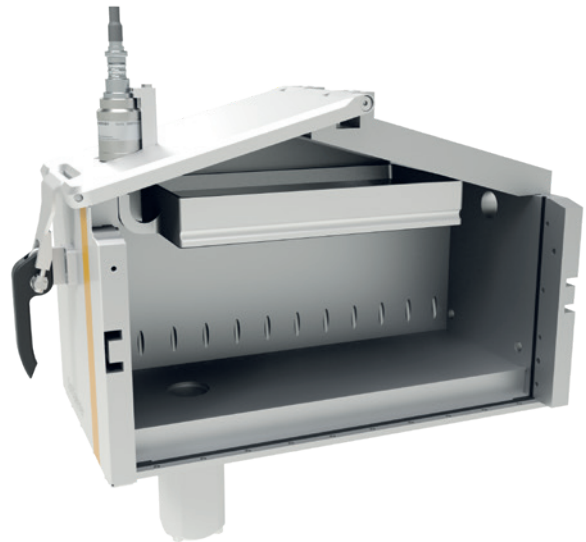
### Powder processing for highest quality demands

The ultrasonic sieve insert US07 screens and loosens the powder and removes all foreign objects before it falls into the powder container of the OptiCenter models OC06, OC07, OC08 as well as OC09 and prepares it for excellent coating results. Screening is carried out as required for fresh and/or recycled powder.

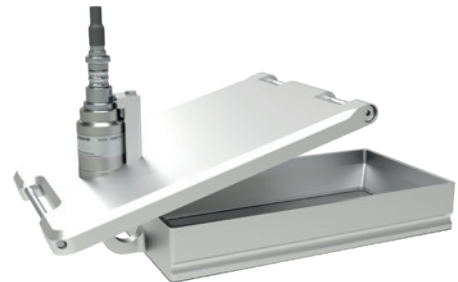
An ultrasonic generator sets the free-swinging sieve frame in uniform motion and enables gentle sieving free of any hotspots.

#### Advantages of the ultrasonic sieve

- Improved application efficiency
- Dissolving and loosening of powder accumulations
- Substantial powder savings
- Retention of dirt particles and fibres
- Self-explanatory sieve activation via the OptiControl control system
- Optimized sieve solution for OptiCenter
- Coupling-free integration into the powder container, so that screening is free-swinging and highly efficient
- Controlled sieve frequency
- Different mesh sizes available
- Ergonomic and easy access for cleaning the complete sieve insert
- ATEX certified (dust approval)



*US07 integrated into OptiSpeeder powder hopper*



*The US07 is compatible with the OptiCenter OC06, OC07 and OC08.*

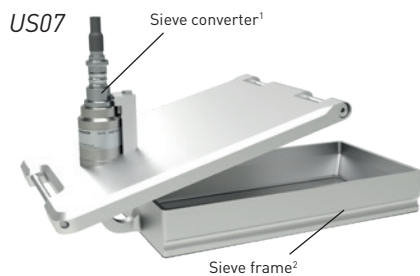


*The US07-01 equips the OptiCenter OC09.*



## Integrated operation

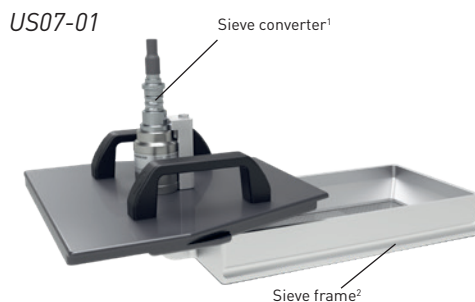
The operation of the OptiCenter is intuitive and takes place via the 7" touch screen of the integrated OptiControl control. The ultrasonic sieve is activated or deactivated at the touch of a button.



## System components for US07 and US07-01

### <sup>1</sup>Sieve converter SK3510 ODU ATEX

- Category  $\text{CE} \text{ II } 1/2 \text{ D Ex tb IIIC T130 } ^\circ\text{C Da/Db}$
- Nominal frequency 33 – 37 kHz
- Protection class IP64



### <sup>2</sup>Sieve frame ED 340x175x51 mm

- Standard mesh size 250  $\mu\text{m}$
- Sieving capacity maximum at 250  $\mu\text{m}$   
Mesh size 3 – 4 kg/min  
(depending on type of powder)
- Further mesh sizes on request



### <sup>3</sup>Sieve generator SG4L pro

- Power consumption max. 100 W
- Ambient temperature 5 – 40  $^\circ\text{C}$
- Protection class IP54 (installed in the OptiCenter)

#### Gema Switzerland GmbH

Mövenstrasse 17 | 9015 St.Gallen | Switzerland  
T +41 71 313 83 00 | F +41 71 313 83 83  
[www.gemapowdercoating.com](http://www.gemapowdercoating.com)

Gema Switzerland reserves the right to make technical changes without notice!

