

Synchronizing axis (YT05)

Synchronized axis solutions driving productivity

The YT05 heavy-duty horizontal axis is specially designed for challenging automatic powder coatings, such as enamel cavity, wheel and enclosure coating.

The axis fulfills the highest requirements on dynamics and stability, making it the optimal solution for users who require a precise synchronized axis movement for product tracking with the conveyor, achieving maximum exposure time of the powder guns to the product.

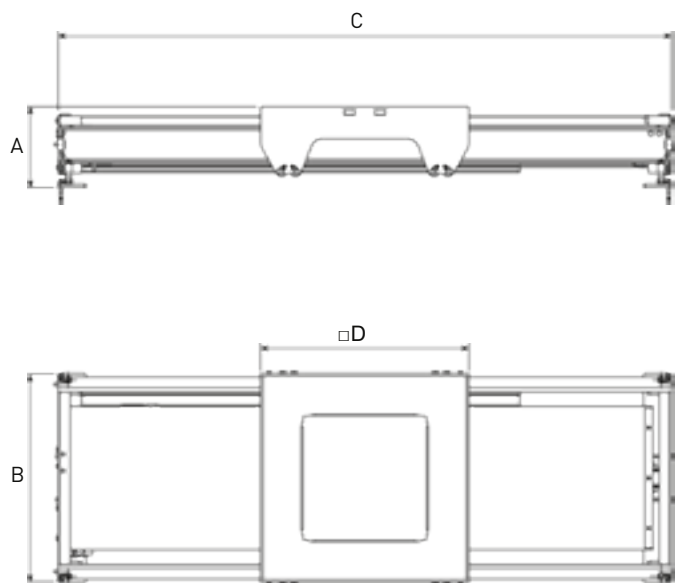
Main Features:

- Precision axis movement directly synchronized with the conveyor up to 7 m/min line speeds
- Precise and stable axis movement at high speeds for accurate gun positioning
- Overall stability for high load capacity of associated components and flexible application arrangement
- Robust design and wear-resistant construction
- Direct access for ease of inspection and maintenance
- Customizable stroke length

Customer Benefits:

- Enables maximum application coverage, increasing productivity and reducing process times, even at high line speeds
- A solution for complex or high surface geometries where extended coating contact times are required
- Precise movement and positioning of the powder guns for optimal coverage, improved quality and reproducible coating results
- Fully integrated process solution that synchronizes coating with part movement
- Flexible components configuration enables a process tailored solution
- Low maintenance design with ease of access for routine maintenance

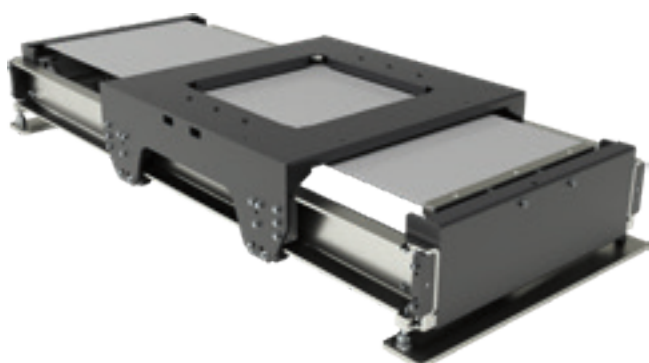




Technical data

Synchronizing axis	YT05
Stroke speed	0.01 - 0.6 m/s
Acceleration	0.1 - 2.0 m/s ²
Stroke*	min. 400 mm – max. 1400 mm <i>Available in 50 mm steps</i>
Height (A)	290 ⁺³⁰ ₀ mm
Width (B)	750 mm
Length min. / max. (C)	1210 / 2210 mm
Platform (□D)	750 mm
Positioning system	Incremental encoder
Voltage	230 VAC, 50/60 Hz
Temperature range	+10 °C to +40 °C
Motor type	Three-phase asynchronous motor
Approval	II 3 D Ex tc IIIC T160 °C (Zone 22)
Power	0.5 kW

*Customized stroke lengths available



Associated system components:

- Vertical reciprocator types ZAxX
- Stationary stand ZS04
- MagicControl 4.0 system control
- OptiGun GA03-X automatic gun

Gema Switzerland reserves the right to make technical changes without prior notice!

Gema Switzerland GmbH

Mövenstrasse 17 | 9015 St.Gallen | Switzerland
T +41 71 313 83 00 | www.gemapowdercoating.com

