

# Application Success Stories

## Vald. Birn A/S Casting & Metalworking

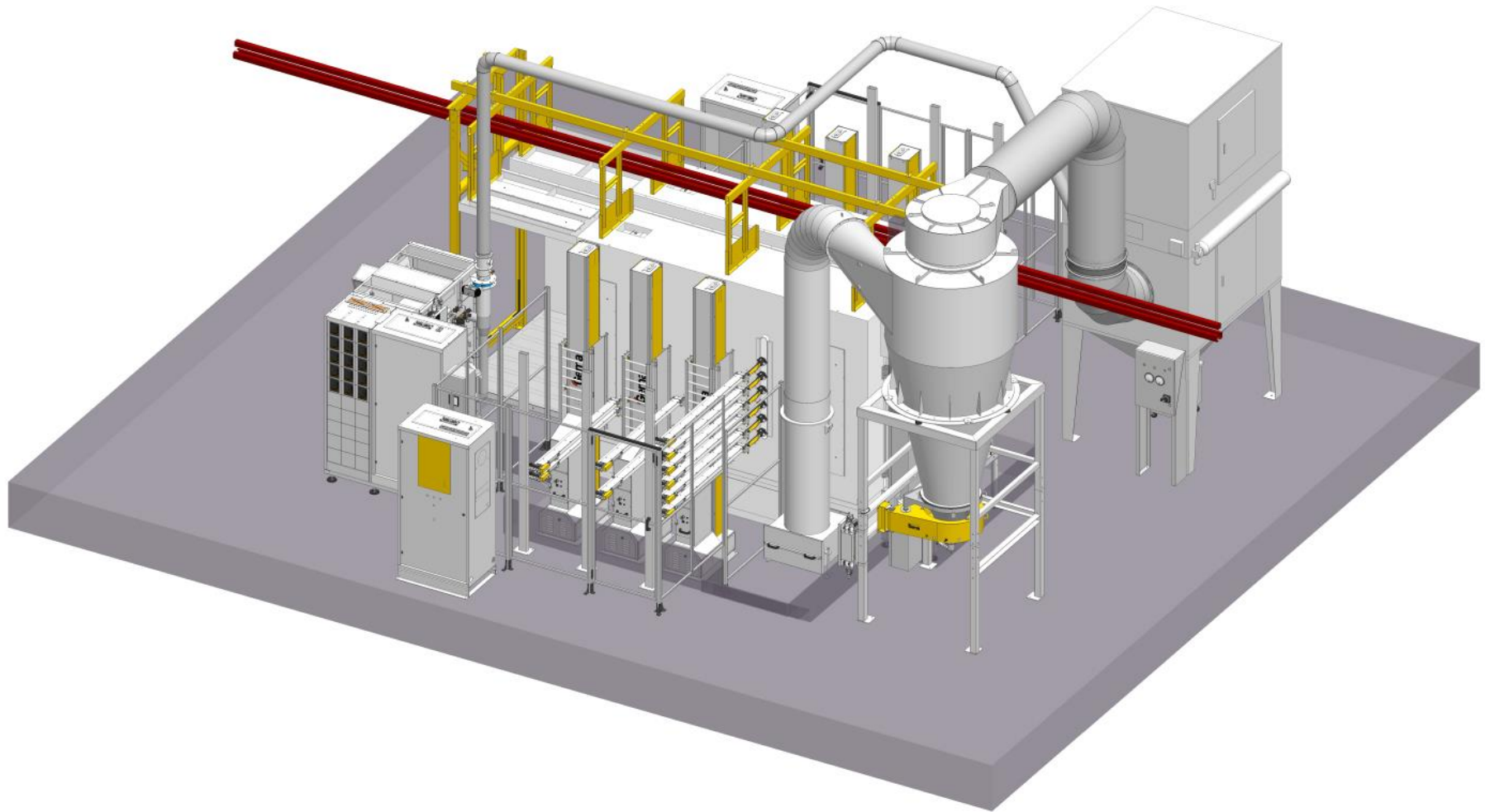


Quality

Process stability

Capacity

# Application Success Stories



# Application Success Stories

## Technical Data

### Parts:

Casting (CDC)

### Parts size:

H 800 mm

W 400 mm

L 400 mm

### Conveyor speed:

V 2.5 m/min

### Scope of delivery:

1 x OptiFlex® AS06 / 21P

20 x OptiGun® GA03P-1700 automatic gun

1 x OptiSelect®2 GM03 manual gun

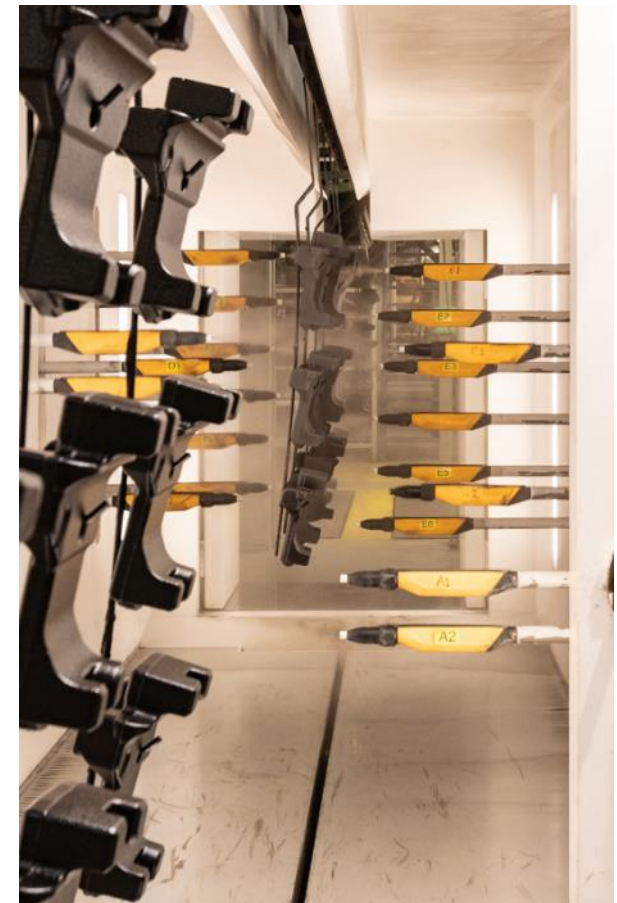
6 x Reciprocator ZA13-18 / XT10

20 x UA04 horizontal axis for individual gun positioning

1 x Control system ICS04/ MagicControl CM30

1 x OptiCenter® OC03 with 21 x AP01 application pump

1 x MagicCompact® EquiFlow® booth system





# Application Success Stories



Founded in 1896, BIRN A/S is one of the largest foundries in Northern Europe and famous for innovative quality solutions. At its headquarters in Holstebro, Denmark, 500 employees produce around 45,000 tonnes of cast components each year. Key customers include the automotive, pump and hydraulics industries.

BIRN offers all the services associated with a casting project. This also includes metalworking as well as surface treatment and the assembly of components. To achieve a higher corrosion protection class, one of BIRN's customers requested a



change to cathodic dip coating (CDC) combined with powder coatings.

As with the CDC system, BIRN also wanted to attain the highest degree of automation in powder coating. In the new powder coating plant, 10 movable U-axes are installed on both sides. The components can thus be suspended in any direction, as the electrostatic guns reach each point of the parts to be coated. The part geometry is automatically detected with the laser scanners at the cabin entrance and the guns are positioned exactly to size according to production specifications and



stored programs. With a new component, the operators have to replace the flat-jet nozzles with angle nozzles at most. To optimize powder output, BIRN uses the OptiCenter® powder centre with AP01 pumps.

With the new powder coating, BIRN achieves optimum values in automation and process reliability. With the new Gemma powder coating, the quality standard has been raised again to a new level and the production capacity has been increased for the future.

# Application Success Stories

