

Application Success Stories

**A well-managed coating line:
Surprise Inspection Is Welcomed At Any Time**



王牌

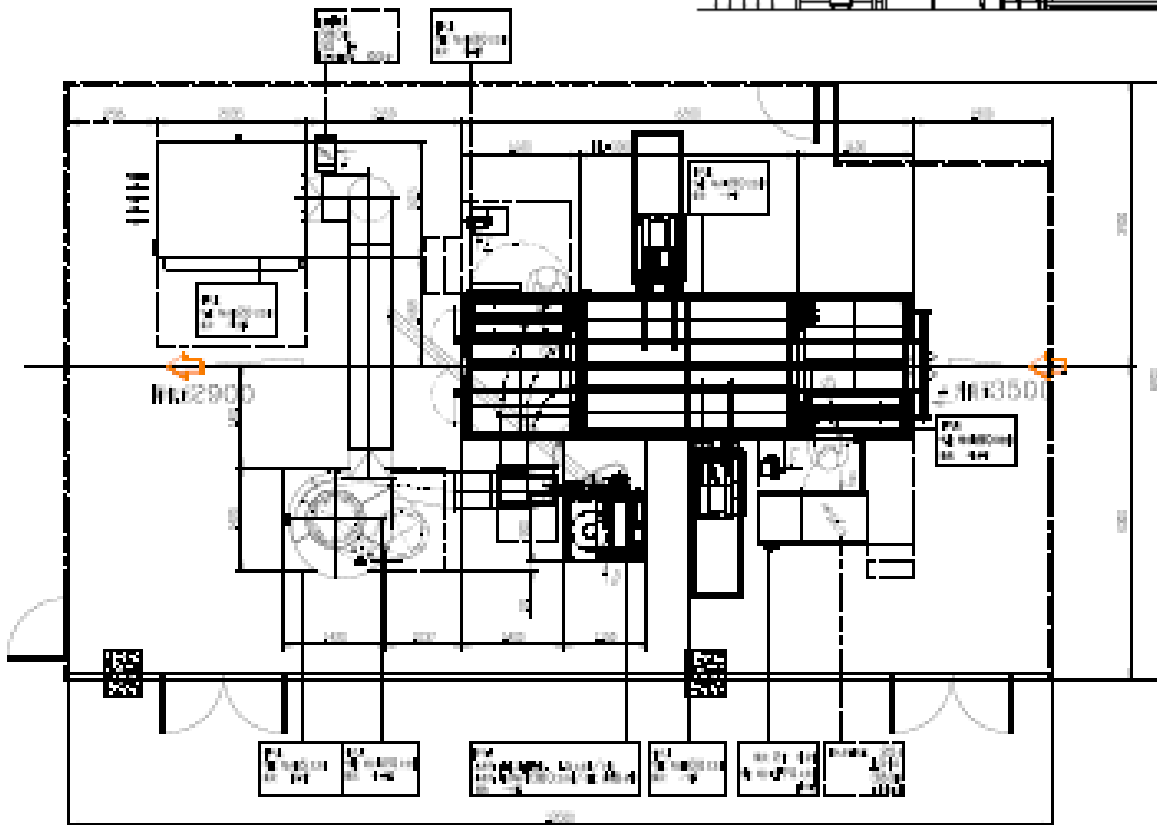
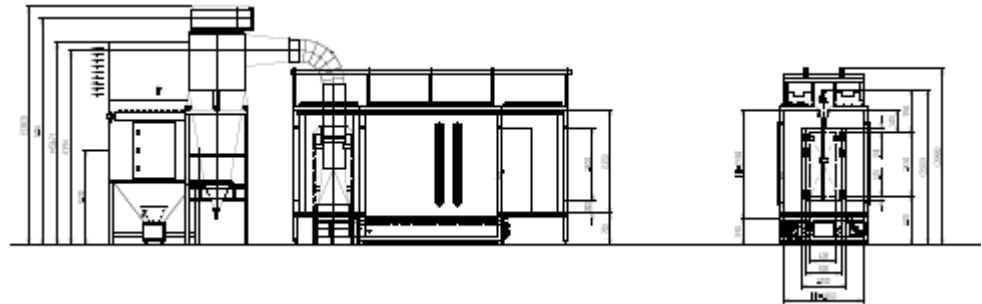
Advanced
Management
Efficiency

High Yield Rate

Clean Workshop

Application Success Stories

Layout



Application Success Stories

Installation Key Data

Object sizes

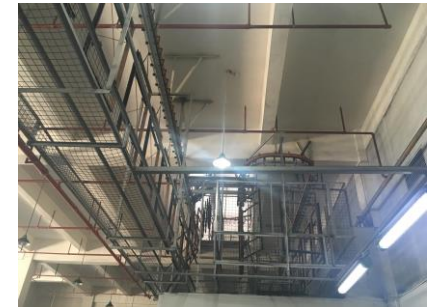
Max : 1440 mm x 810 mm

Mini : 944 mm x 659 mm

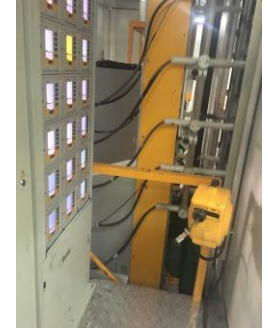
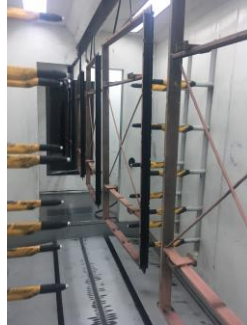
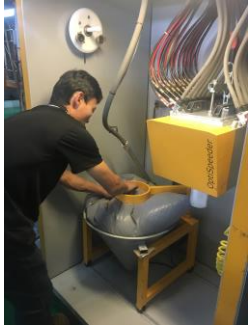
Conveyor Speed: 3.5—5.5 m/min

Scope of delivery:

- 16 x OptiGun GA03 automatic gun
- 2 x OptiFlex 2W manual gun
- 2 x ZA08-18 reciprocator
- 1 x MagicCompact BA02 booth
- 1 x OptiCenter OC02
- 1 x MagicControl CM30 system
- 2 x OptiFeed PP06 powder pump



Application Success Stories



Company Profile

Thai Thai photoelectric (Huizhou) Co. Ltd., one of affiliated enterprises of the TCL group, is a professional precision LCD TV parts manufacturer and related accessories designer. The company has advanced automation equipment and a perfect management system. Clean and efficient production with outstanding quality are always its priorities.

Company Expectation

In the past the powder coating was outsourced. This made it difficult to meet the increasing high requirements from both production and quality side. Gema's good reputation on the market made it the first choice when Thai Thai decided to build a self-producing coating line.

Key to Gema Success

Accompanying Service: Right after the installation, Gema engineers worked closely with the first line operators: commissioning equipment, observing production data, training workers and helping the management. Such a close partnership not only turns beginners into coating experts and loyal spokesmen for Gema but also creates a further maintenance-free effect.

Stable Performance: The line is operated 24 hours and in three shifts every day without any shut-down for nearly 2 years, reaching a huge daily output of 10'000 units, with a rejection rate lower than 1%. The stable performance and high transfer efficiency during long time with no need for too many manual touch-ups

results in cost reductions, especially compared with the outsourced period (**based on inner data analysis**).
Clean Workshop: Any surprise visit is welcomed since the closed powder circuit is always keeping a dust-free ambient atmosphere in the workshop.

An extra booth is under consideration to meet extending demands concerning capacity and color change.