

OptiCenter® All-in-One (OC10)

Maximum benefit in minimum space



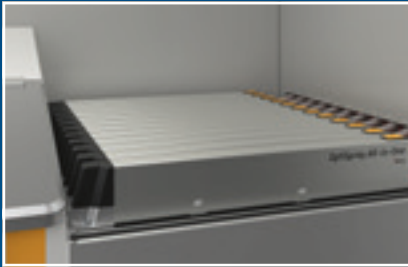
Integrated solution ensures best coating results

The OptiCenter All-in-One (OC10) powder management center is equipped with the latest generation of OptiSpray All-in-One application pump technology and guarantees the fastest powder output response and constant coating results. The system runs fully automatically and ensures efficient color change with simple and intuitive operator guidance.

Your global partner for high quality powder coating



Outstanding application performance



Efficient operation and flexible color change

OptiCenter All-in-One is equipped with an OptiSpeeder powder hopper, which optimally conditions the powder by fluidization.

The short suction distances are designed for fastest powder transport reaction, gentle powder suction and feeding, and ensures reliable coating results.

The closed powder circuit is controlled fully automatically and ensures a clean working environment as well as the highest levels of operating efficiency.



The OptiSpeeder is equipped with a powder level detection, constantly measuring the powder level.

In conjunction with the integral automatic fresh powder supply, the system ensures constant powder availability and ideal condition for consistent powder delivery resulting in highest application results.



*OptiSpeeder powder hopper with
OptiSpray All-in-One pumps*

Individual cleaning efficiency

AirWave Technology provides fully automatic cleaning of the powder hopper and all powder-carrying components, thus achieving the highest cleaning efficiency!

The user can apply the cleaning modes individually:

- **Quality Mode:** cleaning program for contrasting colors and highest cleaning demands
- **Fast Mode:** quick cleaning program for color changes within the same color spectrum
- **Custom Mode:** user-specific color change programs

Fusion of electrostatics and dense phase powder delivery

Precise and reproducible coating results

OptiSpray All-in-One is the first unit in the powder coating industry that integrates electrostatics and dense phase powder feed via pump technology in one compact device.

OptiSpray All-in-One units are directly integrated into the OptiSpeeder powder container and ensures the most responsive powder feed from the powder hopper to the gun, instant activation of the powder cloud and highest transfer efficiency.

The device incorporates Gema's proven powder feeding and electrostatic technologies ensuring a precise powder flow, providing optimal and constant applications results.



OptiSpray All-in-One

All-in-One device - unique and patented product design

- Latest generation of Gema dense-phase technology: Smart Inline Technology (SIT) for linear and reproducible powder output
- Straight path design ensures highest cleaning efficiency due to shortest powder suction distances and bi-directional cleaning
- Precise Charge Control (PCC) for precise current control below 10 μA for special powders and application requirements
- Gema electrostatic technology: PowerBoost[®] providing 110 kV for maximum powder charging capacity
- Digital Valve Control (DVC) for precise powder output control
- Individual coating programs to cover all coating demands
- Bi-directional interface for connection to system control and production data monitoring, with MagicControl 4.0 master control and GemaConnect[®] for advanced system monitoring dashboard



Trendsetting and intuitive



OptiControl powder management control

Easy operation and programming

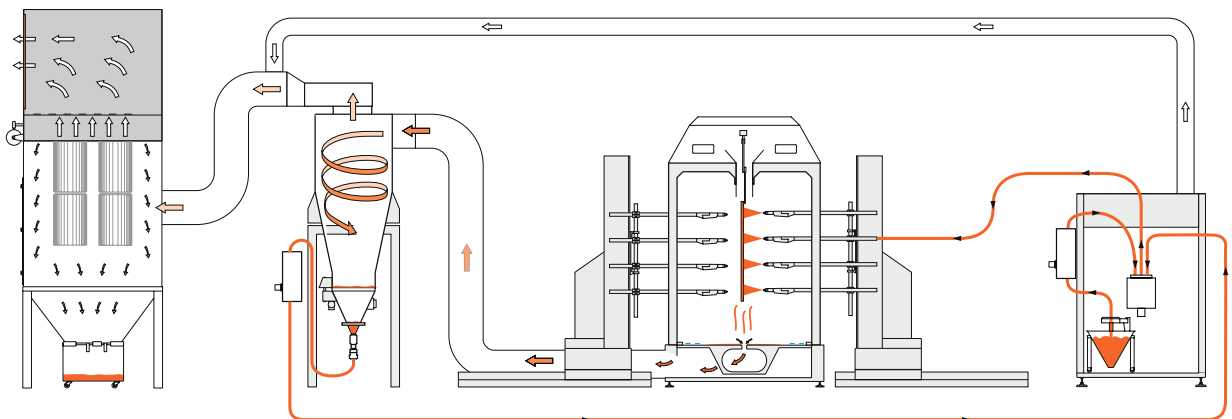
The operation of the OptiCenter All-in-One is particularly intuitive and takes place via the 7" touch screen of the integrated OptiControl control unit.

The OptiControl control unit has the following highlights:

- Intuitive user interface: Easy operation of the coating and color change process
- Coating process: Programmable and user defined timer for the switch from fresh powder to full recovery operation
- Control for minimum fresh powder consumption: Quality increase for coating in recovery operation through controlled additional fresh powder supply
- Selection of the cleaning programs: Quality Mode for deep cleaning, Fast Mode for quick cleaning and Custom Mode for user-specific color change programs

Closed loop and efficient powder circuit

The powder circuit guarantees a continuous and consistent powder feed with minimal wear and tear on components. The OptiCenter, application and powder pumps as well as recovery system are all ideally matched to each other and ensure perfect operating conditions. With a fresh powder feed and sieving solution, the most demanding quality requirements and expectations can be met.



Compact design and flexible configuration

Space-saving design

The OptiCenter All-in-One comes with a very compact design as no cabinet is required; it can be flexibly adapted to any system layout, reducing installation times to a minimum. The result is not only a space-saving solution, but also an ergonomic one.

Gentle powder transportation

The fresh and recovery powder systems are based on the proven OptiFeed powder pumps from Gema. These pumps gently convey the powder ensuring constant powder quality and smooth delivery at the OptiSpeeder. The OptiFeed pumps with the absence of mechanically moving components provide a high performance, low maintenance pump.



OptiCenter All-in-One OC10



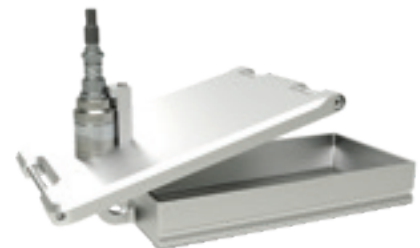
OptiFeed powder pump

A variety of configurations

The OptiCenter All-in-One can be equipped flexibly according to individual production, process and quality demands.

The equipment variants include:

- Ultrasonic sieve insert US07: The sieve insert with reduced micron mesh size, ensure the highest ultrasonic sieving performance for both fresh and recovery powder optimizing coating quality.
- Variants of the internal fresh powder feed:
 - Cone (standard)
 - Vibrating table for powder box
- External fresh powder supply with OptiFeed FPS series



Ultrasonic sieve insert US07





1



2



3



1

1

OptiCenter All-in-One OC10

Excellent Coating Results

- Short suction distances
- Continuous supply of fresh and recycled powder
- Integrated ultrasonic sieve solution

Quick Color Change

- Closed loop powder circuit
- Fully-automated cleaning process with AirWave Technology
- Fully automatic switching from fresh powder to recovery operation

Compact Design

- Space-saving system integration (no control cabinet)

Ergonomic and intuitive Interface

Simple maintenance procedures

2

OptiSpeeder

- Sealed powder hopper
- Easy viewing access to the hopper internal area
- Versions: up to 24 or 36 integrated application pumps
- Constant powder level control

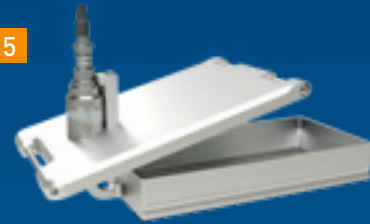
Cleaning

- Automatic cleaning OptiSpeeder powder hopper with AirWave Technology
- Automatic cleaning of the suction tubes, powder hoses and guns
- Automatic cleaning of the fresh powder and recovery pump and hoses

3

Pump Integration

- Space-saving pump integration for easy access and maintenance
- Fastest reaction times (powder on/off) due to direct connection of the pump to the OptiSpeeder hopper and the elimination of all pneumatic lines between control and pump
- Up to 36 guns can be supplied from one powder hopper thanks to the compact arrangement of the controls
- Completely pre-assembled system, ready for operation



4

OptiControl

- User defined timer for the switch from fresh powder to full recovery operation
- Blending of fresh and recovered powder ensures minimum powder consumption
- Cleaning programs: Quality, Fast and Custom Mode

5

Ultrasonic Sieve

- Sieving of recycled and fresh powder
- Free-swinging sieve surface for maximum sieving performance
- Different mesh sizes available
- Extremely gentle sieving

6

OptiSpray All-in-One

- Merged electrostatics and powder feed in one unit
- SIT concept (Smart Inline Technology) with single chamber
- Automatic wear part diagnostic
- Compact design for a perfect system integration
- Stable application quality over long time
- Automatic cleaning program for color change
- Accurate and repeatable powder output settings
- PCC (Precise Charge Control) for exact current control below 10 μA in 0.5 increments
- PowerBoost for or maximum powder charging capacity
- CAN-Bus for communication with superior control system

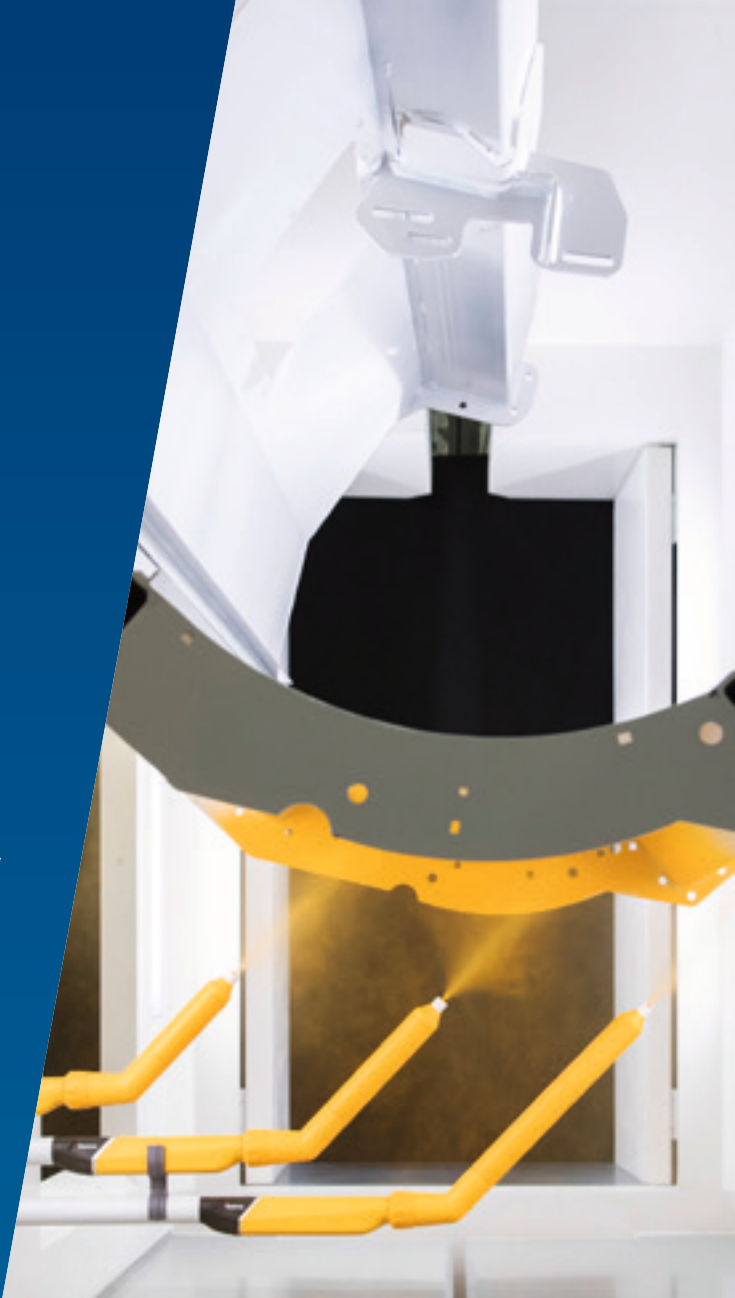
Quick and easy maintenance procedure requiring no tools

Gema Switzerland

Your global partner for high quality powder coating

Take advantage of our expertise and experience from more than 50 years of electrostatic powder coating applications. From simple hand coating through to fully automated powder coating, we offer solutions that meet the demands and requirements of customers around the world in a wide range of industrial sectors. A global service network ensures you always get professional support, at any time and any place!

Gema is part of Graco Inc. Our goal is to help our customers to increase their productivity while creating attractive, long-lasting products. Our experts continually set new standards in the surface coating industry.



Gema Switzerland GmbH reserves the right to make technical modifications without notice. Illustrations in brochures may contain special options and do not necessarily correspond to the standard version. EquiFlow, Gema, MagicCompact, MagicControl, MagicCylinder, OptiCenter, OptiFlex, OptiFlex Pro, OptiFlow, OptiGun, OptiSelect, OptiSpeeder, OptiStar, OptiStar All-in-One, GemaConnect and PowerBoost are trademarks of Gema Switzerland GmbH.

Gema Switzerland GmbH

Mövenstrasse 17 | 9015 St.Gallen | Switzerland
T +41 71 313 83 00 | www.gemapowdercoating.com

